



Número	Entrada	Salida
--------	---------	--------

ESPECIE: Caprino

MUESTRAS

- 1 Pulmón
- 1 Ganglio mediastínico

IMAGENES ANATOMOPATOLÓGICAS

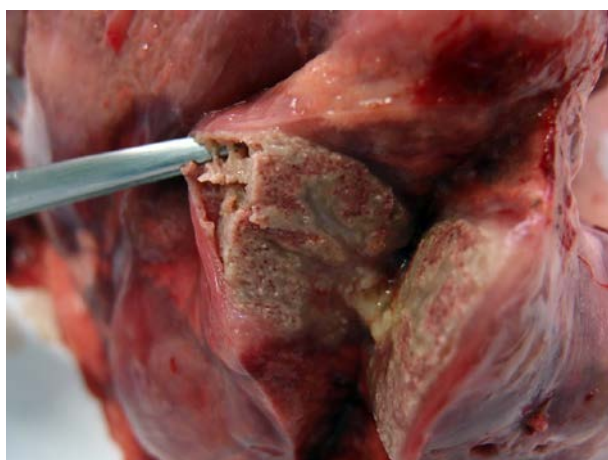
Tuberculosis caprina. Focos de necrosis por caseificación y cavernas. Presencia de micobacterias (tinción de Ziehl-Neelsen) ligadas a las lesiones



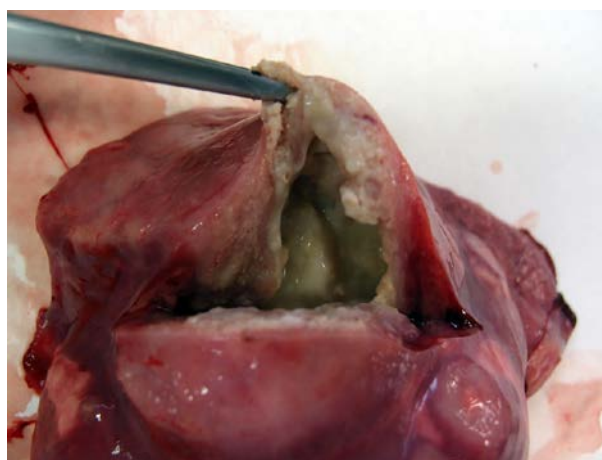
1.



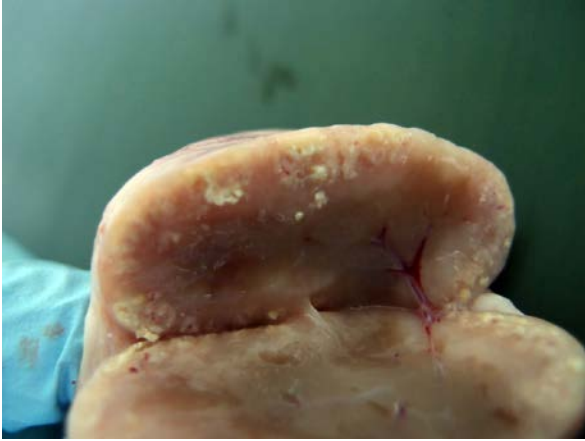
2.



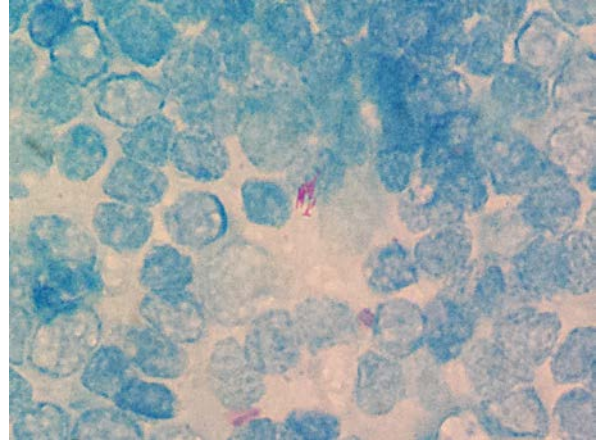
3.



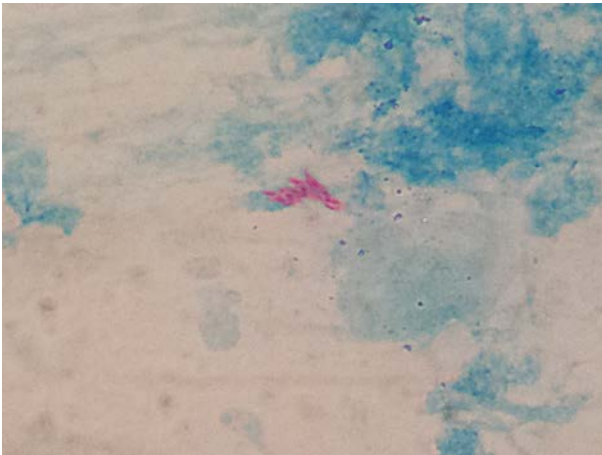
4.



5.



6.



7.